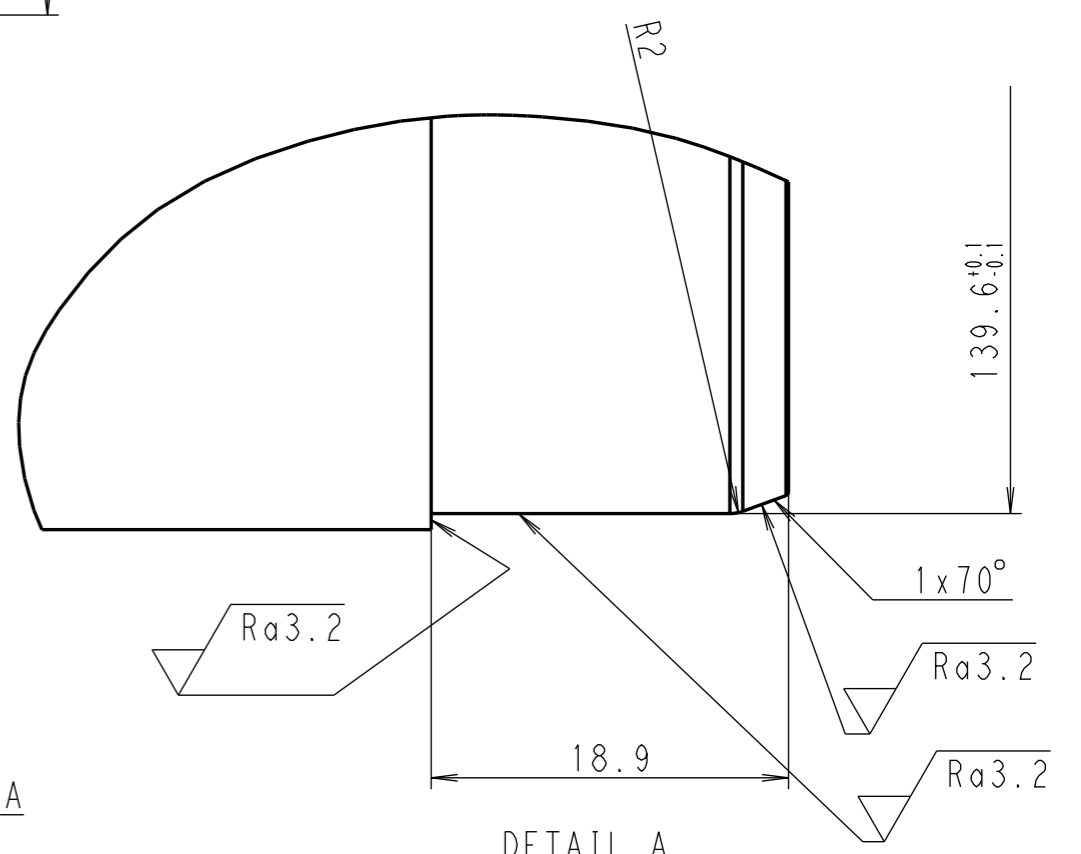
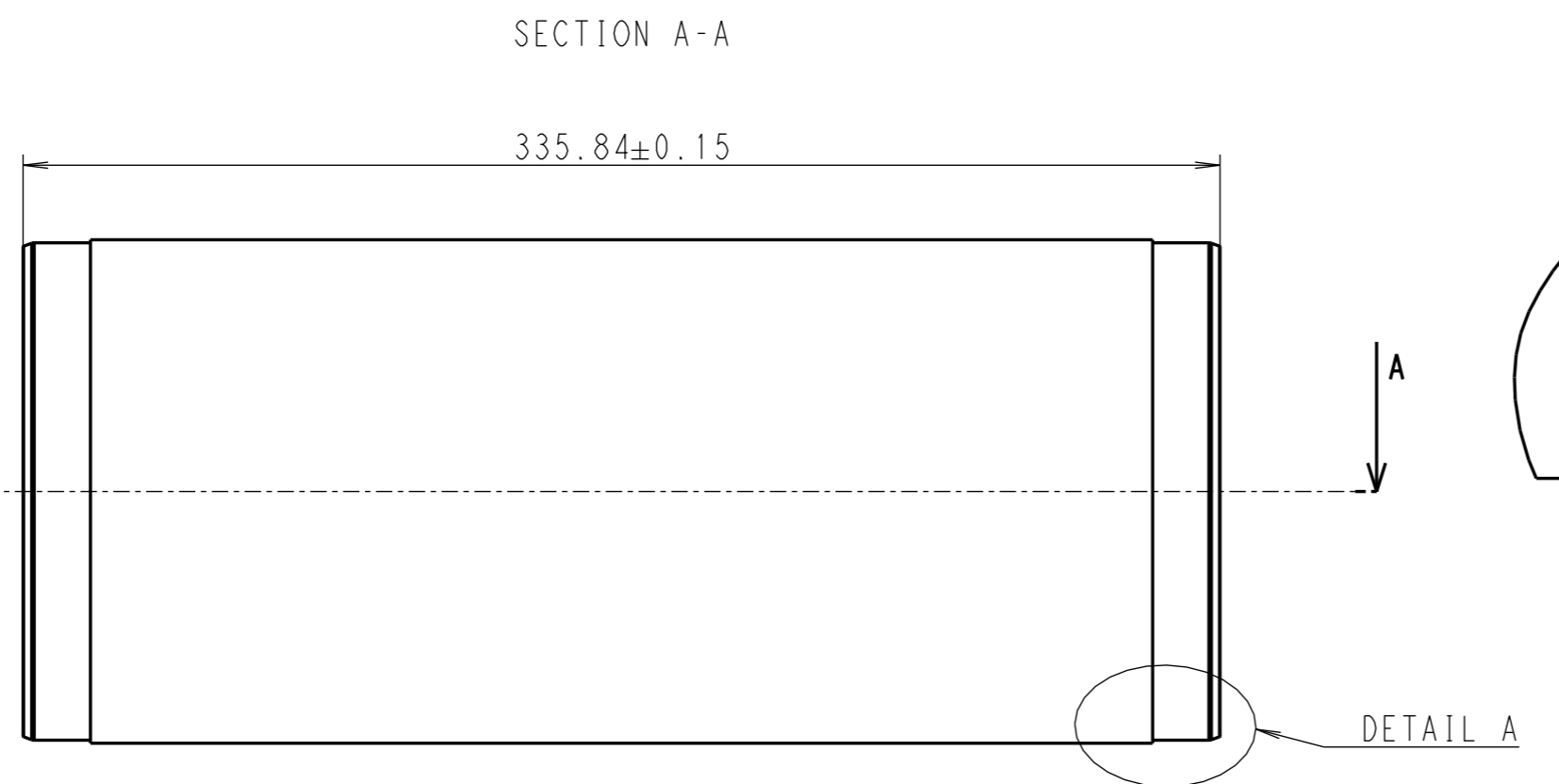
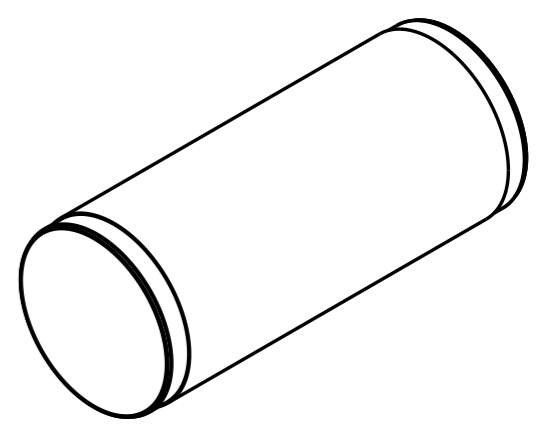
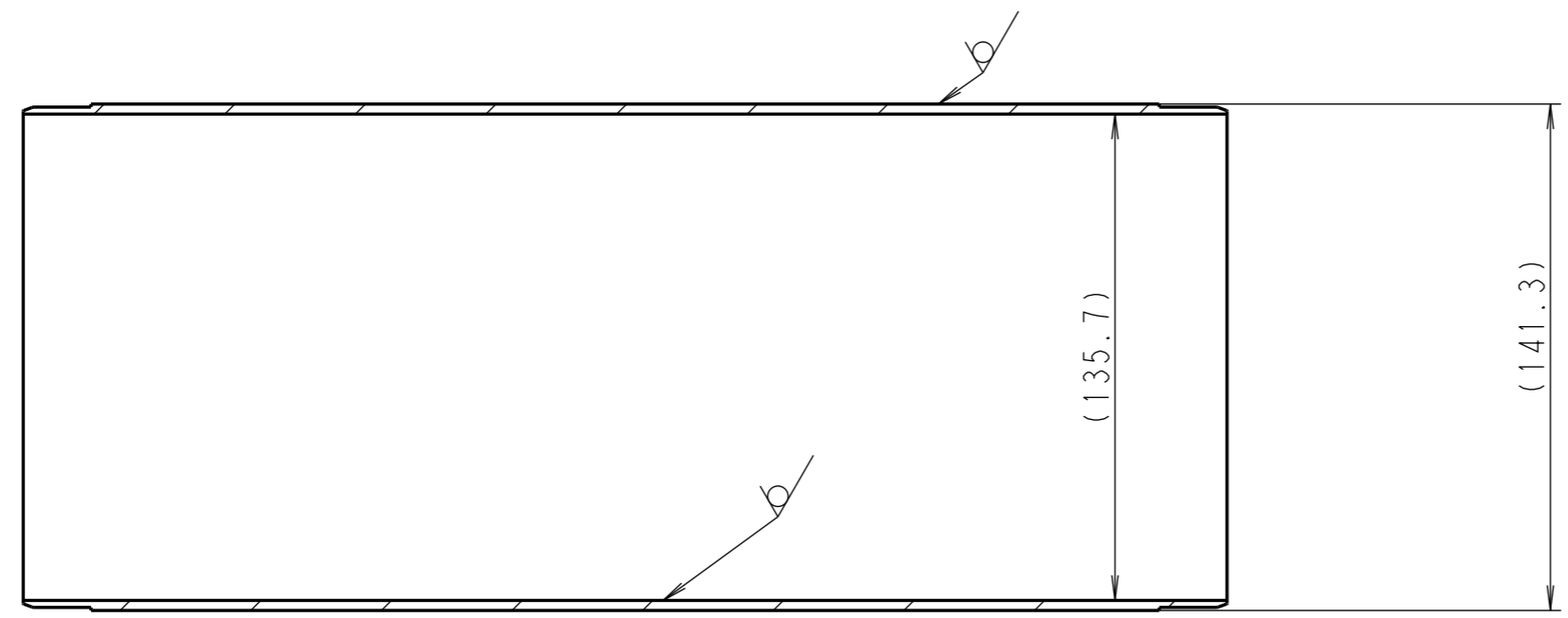


WARNING: EXPORT CONTROLLED - RESTRICTED - CONFIDENTIAL  
 Property of DMG MORI. DISCLOSURE TO FOREIGN PERSON OR ENTITY PROHIBITED. Contact Export Control Dept. for disclosure procedures and approvals. Violations are subject to sanctions incl. termination.

管理文書

出 24.10.25

| DIMENSION RANGE             | 0.5 ≤ L ≤ 3 | 3 < L ≤ 6 | 6 < L ≤ 30 | 30 < L ≤ 120 | 120 < L ≤ 400 | 400 < L ≤ 1000 | 1000 < L ≤ 2000 | 2000 < L ≤ 4000 |
|-----------------------------|-------------|-----------|------------|--------------|---------------|----------------|-----------------|-----------------|
| GENERAL DIMENSION TOLERANCE | ± 0.10      | ± 0.10    | ± 0.20     | ± 0.30       | ± 0.50        | ± 0.80         | ± 1.20          | ± 2.00          |



DETAIL A  
 SCALE 5:2  
 2 PLCS

USE STEEL PIPE; OUTSIDE DIAMETER 5 INCH, THICKNESS 0.109 INCH  
 外径 5 INCH、厚さ 0.109 INCH の鋼管を使用のこと

ACCEPTABLE USA MATERIAL SUBSTITUTE: SS304  
 米国内のみ代用可能素材: SS304

SURFACE FINISH  $\sqrt{Ra6.3}$  WHERE NO INDICATION  
 指示なき仕上げ  $\sqrt{Ra6.3}$  のこと

CHATTER AND TEAR ARE NOT ALLOWED ON MACHINING SURFACE  
 加工面にびびり・おしれは認めない

CORNER WITHOUT INDICATION SLIGHT CHAMFERING(C0.2~C0.5)  
 指示なき角部 糸面取(C0.2~C0.5)

|  |            |              |                  |             |                        |                                  |                |                       |        |
|--|------------|--------------|------------------|-------------|------------------------|----------------------------------|----------------|-----------------------|--------|
| The property and copyright is entitled to: DMG MORISEIKI CO<br>--Copyright according to ISO 16016 consider-- |            | Part Number. | wf.              | Date(d.m.y) | Name                   | Pre:                             | Document type: |                       |        |
|  |            | 5589394      | drw.             | 08.10.2024  | HAJIME YAMANAKA,       | O.C.:                            | Part drawing   |                       |        |
|  |            |              | rew.             | -           | -                      | Mass:                            | 3.12 kg        | Format: A3 Scale: 1:2 |        |
|  |            |              | rel.             | 25.10.2024  | FRED CARTER,           | Material:                        | SUS304         |                       |        |
|  |            |              |                  |             | THIRD ANGLE PROJECTION | Title :                          |                |                       |        |
|  |            |              |                  |             |                        | PIPE - *-ST*CYCLONE_TUBE<br>Pipe |                |                       |        |
| 001  | 5340639    | 08.10.2024   | HAJIME YAMANAKA, |             | Drawing Number:        |                                  | Rev.:          | Type:                 | Sheet: |
| Rev.   | Change No. | Date(d.m.y)  | Changed by       |             | 5589394                |                                  | 001            |                       | 1/1    |